

# MINIMIZE DISTRACTIONS

LIGHTROOM AND PHOTOSHOP TIPS  
BLOOMINGTON PHOTOGRAPHY CLUB  
OCTOBER 2021





# LIGHTROOM

GREAT FOR REMOVING SMALL DISTRACTIONS

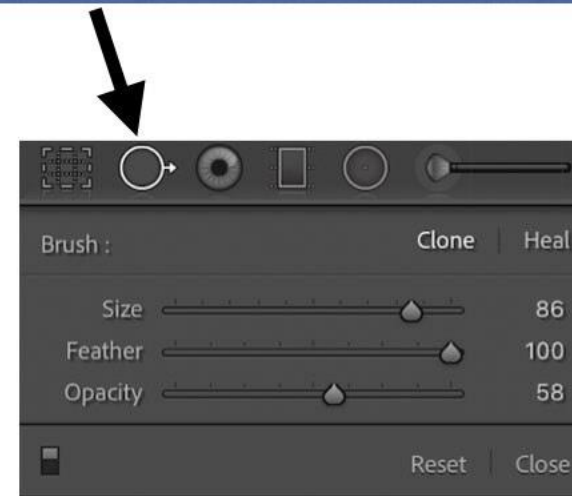


BEFORE

Clone/Heal Brush

Crop

Heal=Blends Pixels  
Clone=Exact Copy



AFTER

Shortcuts  
Cmd+ zoom in  
Cmd- zoom out

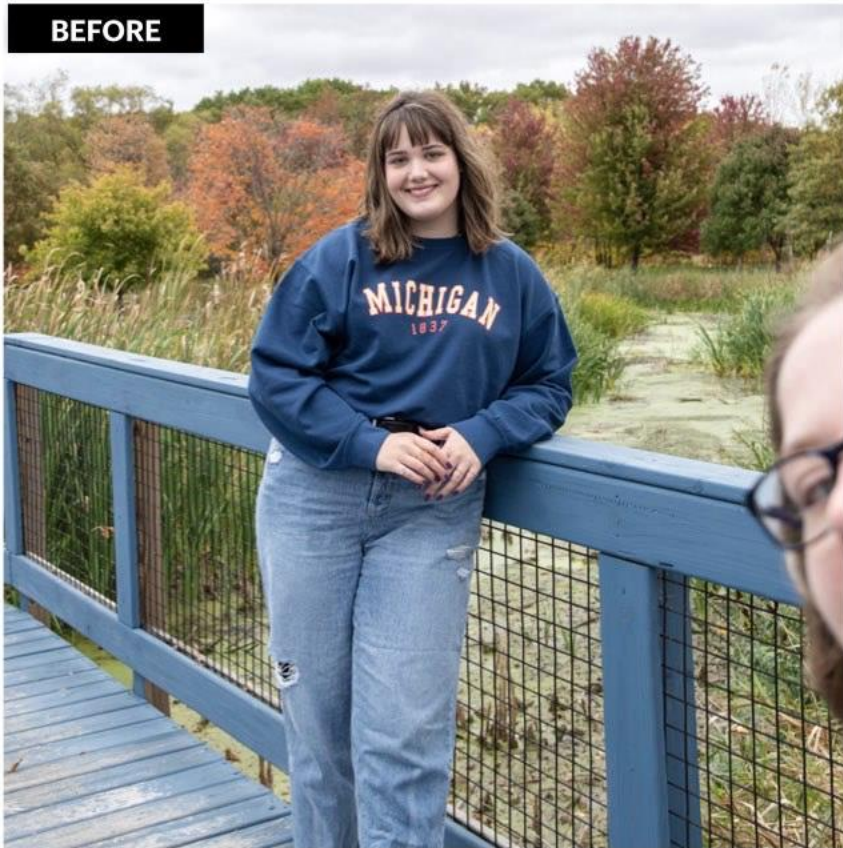
[ decrease brush size  
] increase brush size



# PHOTOSHOP

## FOR REMOVING MORE COMPLICATED DISTRACTIONS

BEFORE



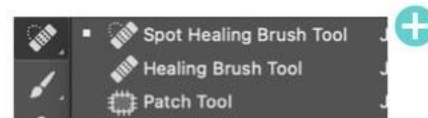
### Method 1

Patch Tool  
Clone Stamp



### Method 2

Spot Healing Tool  
Clone Stamp



AFTER



### Keyboard Shortcuts

New Layer CMD-J

Zoom In/Out CMD+ CMD-

Inc Brush Size ]

Dec Brush Size [